

IMPORTANT: ENVELOPE ARTWORK GUIDELINES

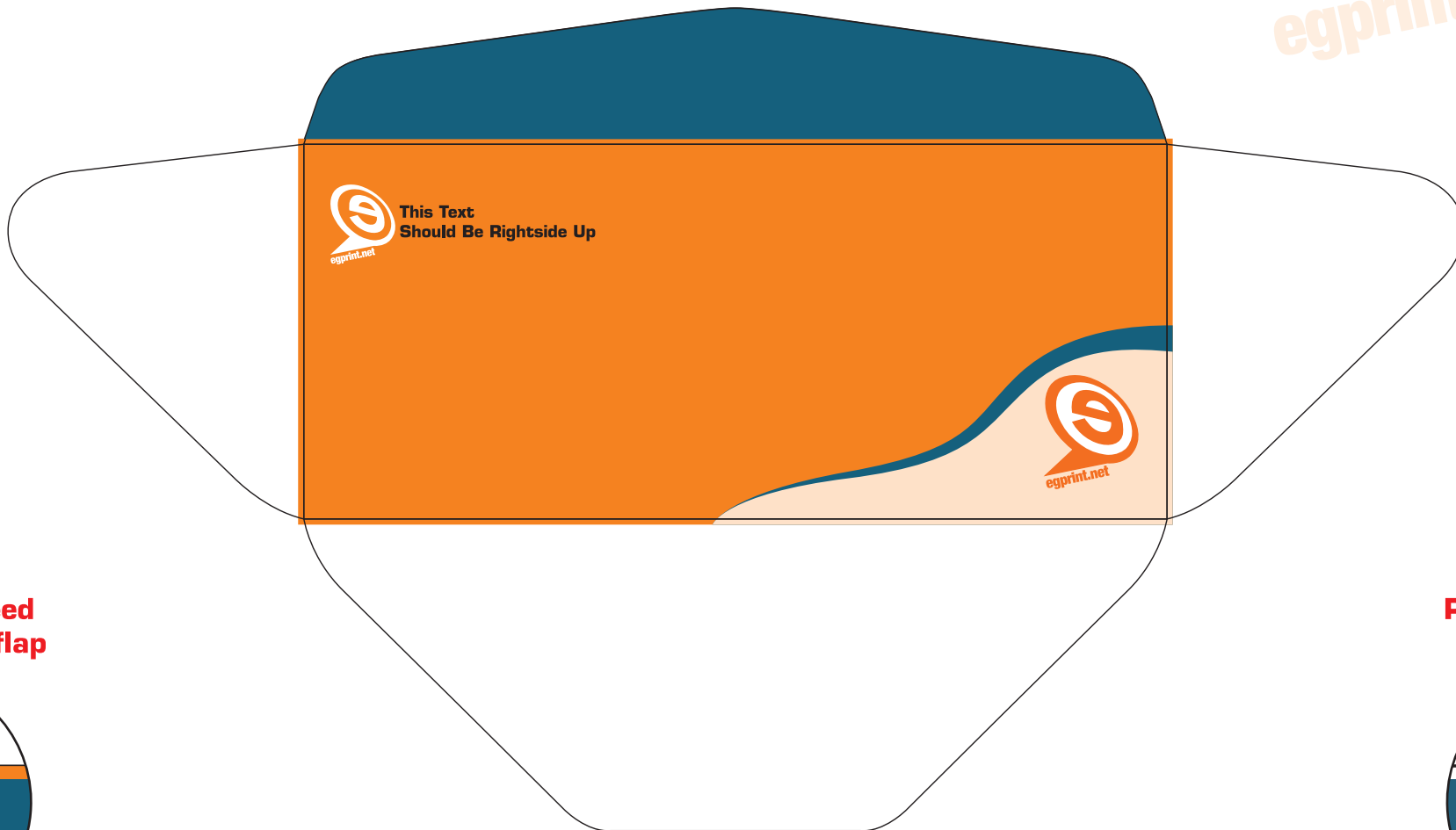
It is required that there be 1/16" overbleed and color wrap onto the back of the envelope to allow for movement throughout the bindery process.

It is normal for the artwork on the finished envelopes to vary slightly from one piece to another because of movement during the run and could vary up to 1/8". As result of the intensive bindery processes, die cutting, scoring, folding and gluing (converting), the color wrap and over-bleed may not be even on all sides.

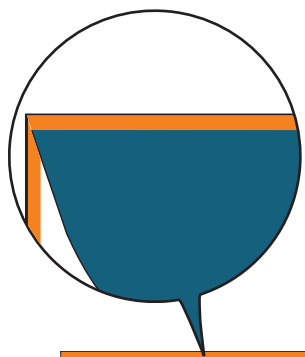
EGPRINT TEMPLATES

To produce envelopes at the highest quality possible, artwork that has bleed on the face or print on any flap is required to be placed on our template. This will ensure that the artwork layout is aligned the way it is intended to print and be converted.

Front View of a Flat No. 10 Envelope



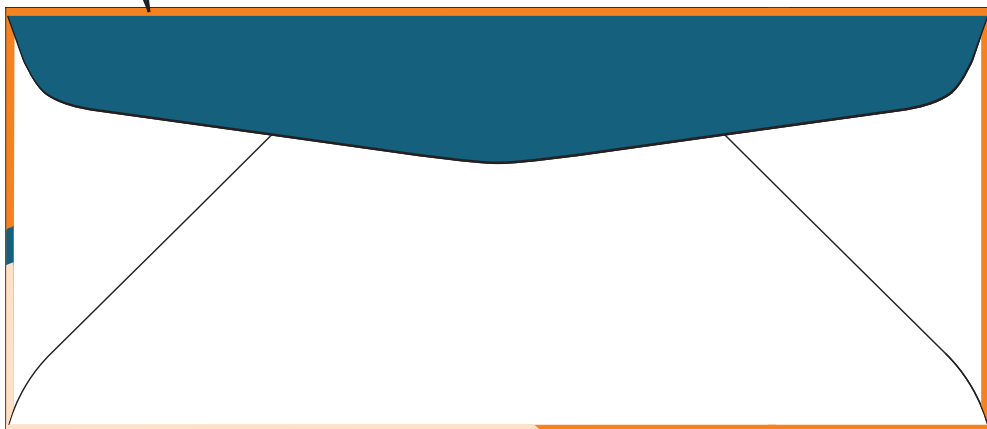
Printed with bleed
on the face and flap



Printed with bleed
on the flap only



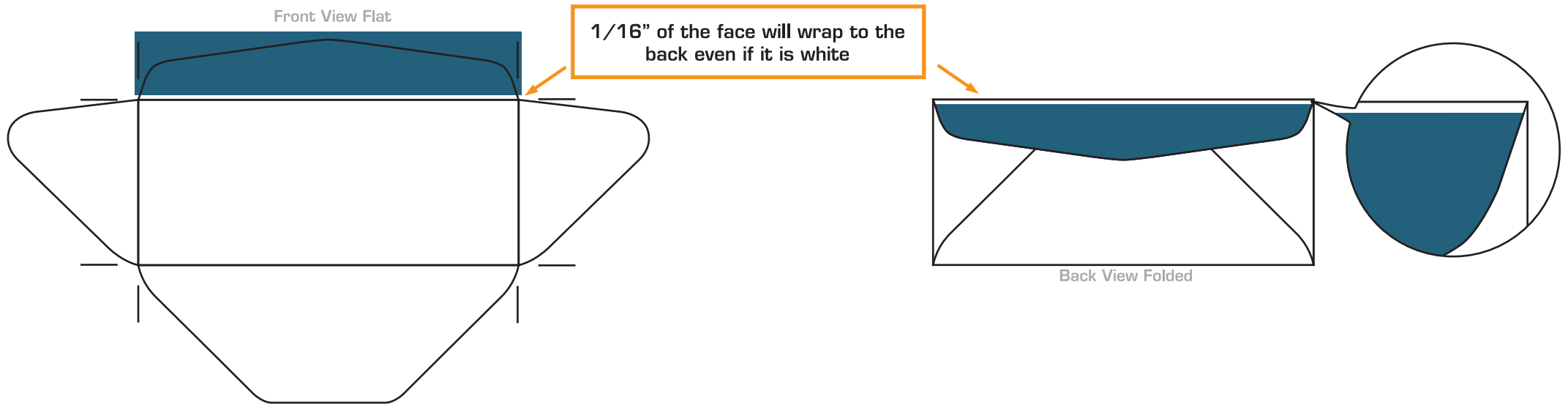
Back View of a folded and converted No. 10 Envelope



IMPORTANT: ENVELOPE ARTWORK GUIDELINES

It is required that there be 1/16" overbleed and color wrap onto the back of the envelope to allow for movement throughout the bindery process.

Normal overbleed / Color wrap



Ideas for designers to avoid the appearance of overbleed / Color wrap

